

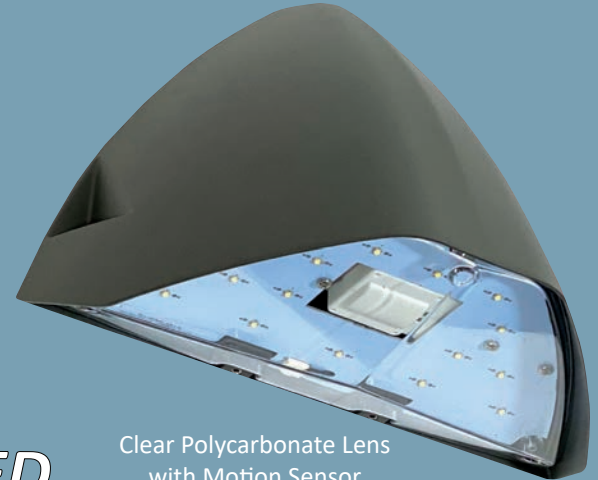


# EasyLED Wall Mount Cutoff Luminaire

## Contemporary Series, WPC30

### PRODUCT OVERVIEW

The WPC30 Wall Mount Cutoff Luminaire combines aesthetics and installer-friendly features for building entrances, balconies, stairwells, and walkway lighting projects. The IP66 sealed LED housing offers excellent optical control and heat dissipation for long life. The smooth sculptured geometric shape blends with any architectural style. The opal LumaLens provides soft visually comfortable illumination. WPC30 is perfect for Multi-family residential, commercial office parks, dormitories, medical offices, and industrial park exterior building projects.



Clear Polycarbonate Lens with Motion Sensor

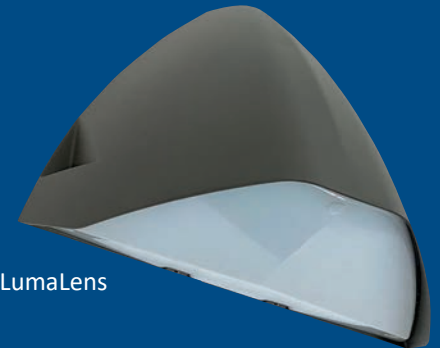
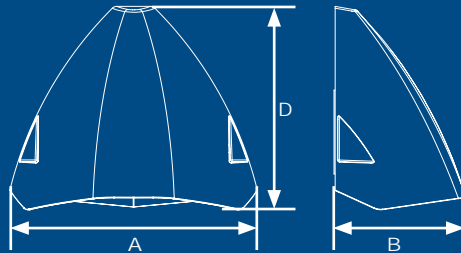


**LED**icated

Soft**LED**

#### Dimensions

Width (D)	12½" (319mm)
Length (B)	6¾" (168mm)
Height (A)	10¼" (262mm)



Opal LumaLens

**Inquire about Rapid Ship**

813-855-9416

#### CONSTRUCTION

Diecast aluminum housing

Textured architectural bronze powdercoat finish over a chromate conversion coating

Nickel-plated stainless steel hardware

#### LIGHT ENGINE

LED array is mounted to an integral diecast aluminum heat sink.

14 or 22 Array watts 1,480 to 2,870 delivered lumens, 3K, 4K, 5K CCT

120-277VAC or 347VAC driver, 0-10V dimming

#### OPTICS

Optics output includes IES Type IV and V

Lens options include one-piece polycarbonate clear or opal LumaLens

Clear lens is full cutoff

#### MOUNTING

Easy Hang wall mount system fits over standard 4" box

#### OPTIONS

Integral 120/277VAC photocell

Integral microwave motion sensor

Fusing and surge protection

Battery backup

Catalog Number: WPC30Q(D,F)1X(14,22)(3K,4K,5K)(C,L)Z=Bronze  
IN STOCK - AVAILABLE NOW

12802 Commodity PL , Tampa, FL 33626 | Phone: 813-855-9416 | [www.qssi.com](http://www.qssi.com)